

**Princes Street**  
Dorchester, DT1 1RL

 1  1  1  C

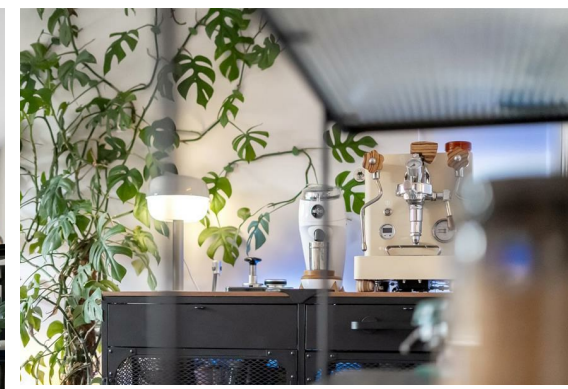
**Asking Price £160,000**

**Hull**   
**Gregson**  
**Hull**

# Princes Street

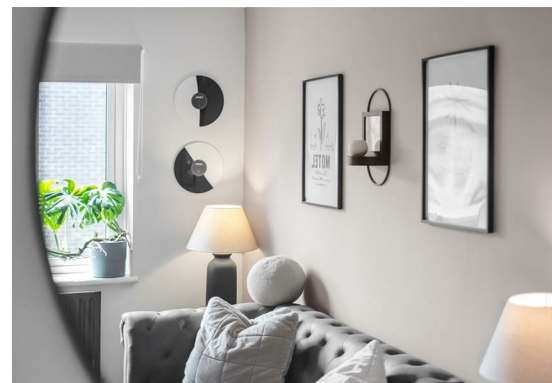
Dorchester, DT1 1RL

- Well-Presented Apartment
- Light & Airy Accommodation
- Allocated Parking Space
- Convenient Central Location
- Close to Local Amenities
- Ideal Step onto the Property Ladder
- Level Walk to Nearby Transport Links
- Well-Proportioned Double Bedroom
- Tastefully Decorated
- Council Tax Band A & Long Lease Term





In the heart of Dorchester Town Centre, this CHARMING ONE BEDROOM APARTMENT on Princes Street offers a perfect blend of comfort and convenience. The property is a PERFECT STEP ONTO THE PROPERTY LADDER and presents an excellent opportunity for first time purchasers in a vibrant town known for its rich history and community spirit. The home also has the added bonus of an ALLOCATED PARKING SPACE and BRAND NEW BOILER.



The flat features a well-presented living room. The living room is tastefully decorated by the current owner, currently hosting a sofa, television unit and various other furnishings. The space provides a welcoming space for relaxation and entertaining.

The bedroom is thoughtfully designed, with ample space for a double bed and wardrobe, ensuring a peaceful retreat at the end of the day. A modern bathroom with panelled bath with shower over, wash-hand basin and WC completes the accommodation, catering to all your daily needs.

The neatly-presented kitchen comprises neutral base level and wall mounted units with white modern worktops over as well as space for freestanding appliances with a pleasant outlook.



The benefit of an allocated parking space is a rare find in such a central location: this added convenience allows for easy access to your vehicle while you enjoy the nearby amenities and transport links that Dorchester offers. Shops, eateries and public transport are just a stone's throw away - everything you could want within easy reach.

Viewings come highly advised to fully appreciate the property on offer.



### Princes Street, Dorchester, DT1 1RL

Approximate Area =406.99 sq ft / 38.13 sq m

For Identification only - Not to Scale



These floor plans are for general guidance only. All measurements and areas are approximate. No warranty or representation is made as to their accuracy, and they should not be relied upon for contractual or legal purposes. Interested parties must verify all details independently.

### Inner Hallway

### Living Room

14'1" x 10'2" (4.31 x 3.12)

### Bedroom

10'3" x 9'2" (3.14 x 2.81)

### Kitchen

10'2" x 8'3" (3.11 x 2.52)

### Bathroom

### Allocated Parking

### Dorchester Additional Information

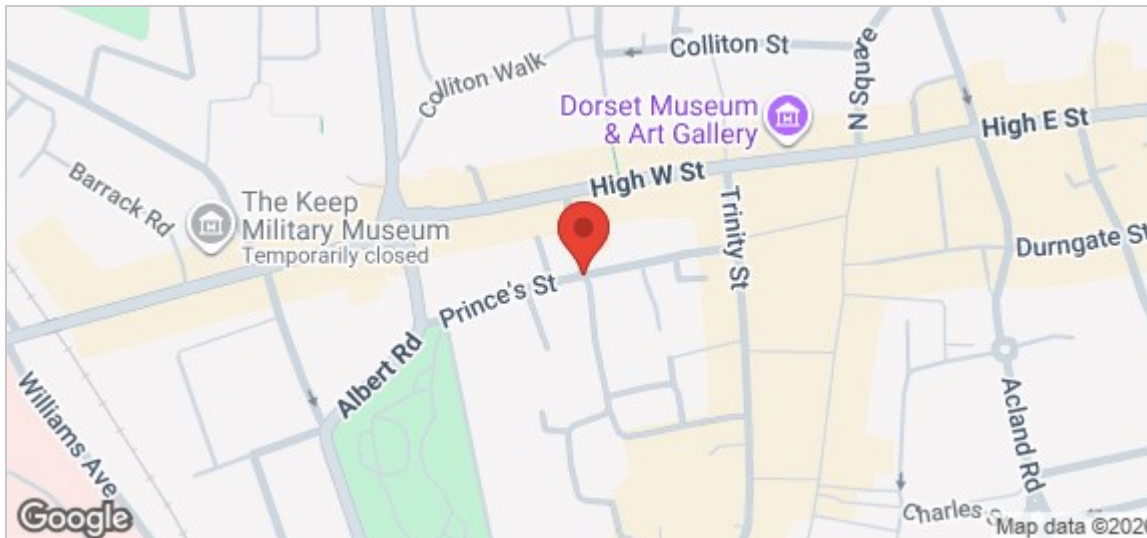
The following details have been provided by the vendor, as required by Trading Standards. These details should be checked by your legal representative for accuracy.

Property type: Apartment  
Property construction: Purpose Built Apartment Block  
Mains Electricity  
Mains Water & Sewage: Supplied by Wessex Water  
Heating Type: Gas Heating

Broadband/Mobile signal/coverage: For further details please see the Ofcom Mobile Signal & Broadband checker.  
[checker.ofcom.org.uk/](http://checker.ofcom.org.uk/)

### Dorchester Disclaimer

These particulars, whilst believed to be accurate are set out as a general outline only for guidance and do not constitute any part of an offer or contract. In some instance, virtual staging and virtual enhancements are used. Intending purchasers should not rely on any photos or descriptions as statements of representation of fact, but must satisfy themselves by inspection or otherwise as to their accuracy. All measurements are approximate. Any details including (but not limited to): lease details, service charges, ground rents, property construction, services, & covenant information are provided by the vendor and you should consult with your legal advisor/ satisfy yourself before proceeding. No person in this firms employment has the authority to make or give any representation or warranty in respect of the property.



Energy Efficiency Rating		Current	Potential
Very energy efficient - lower running costs			
(92 plus) A			
(81-91) B			
(69-80) C			
(55-68) D			
(39-54) E			
(21-38) F			
(1-20) G			
Not energy efficient - higher running costs			
		72	74
England & Wales		EU Directive 2002/91/EC	

Environmental Impact (CO <sub>2</sub> ) Rating		Current	Potential
Very environmentally friendly - lower CO <sub>2</sub> emissions			
(92 plus) A			
(81-91) B			
(69-80) C			
(55-68) D			
(39-54) E			
(21-38) F			
(1-20) G			
Not environmentally friendly - higher CO <sub>2</sub> emissions			
England & Wales		EU Directive 2002/91/EC	